

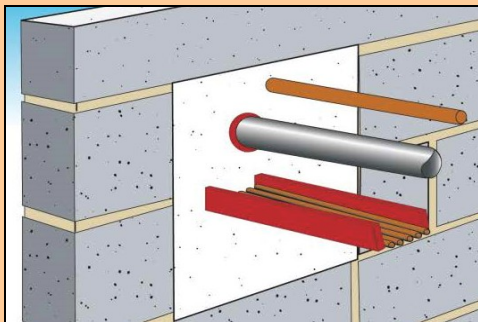
A course for
Engineers &
Managers

Fire stopping for services installations



A certificated *half day* course
Attendance dates to meet **YOUR** needs
at **YOUR** place of work or at a venue of your choice.

Delivered by a Tutor who is a
Chartered Practitioner with IOSH and a Mechanical Services Engineer



Fire stopping where pipes, cables and ducts pass through specific walls and floors etc is **legally required to be sealed against fire** including vulnerable socket outlets.

Have you had electricians, plumbers, heating engineers, IT engineers, telephone engineers, air-conditioning engineers etc undertake work and **have they fire stopped where they have penetrated your compartment fire protected walls and floors etc ?** If not, then it could compromise safety & involve a costly fine.

*This half day course will serve to ensure managers and supervisors clearly understand fire stopping and how improvement and repair works could adversely affect the controls put in place for compliance with **The Regulatory (Fire Safety) Reform Order 2005** or indeed the original Building Regulation approval. Service engineers will gain from an understanding of when and where fire stopping should be installed, how it is done, what materials should be used, the limitations of certain types and what to use and where to use it properly. Classroom based practical exercise included as part of the course.*

Course notes included, **half days tuition** (typically 0900 to 1230)

This is a certificated course and there is a practical exercise & multi choice examination on completion..
(you can have as few as you like in the group or the max permitted or even 1:1 tuition)

Course content and duration may vary as a result of changes needed to comply with the requirements of legislation or necessary updates, but details were correct at the time of publication.

Quotations by BST are provided for the course to meet your specific requirements and will vary dependant on the number of candidates, distance, and venue etc.

Bespoke Safety Training & Consultancy Limited

☎ 0115 928 4221 ask for Chris Haley ✉ safety.bespoke@gmail.com

www.bespokesafetytraining.com

Nottingham, East Midlands NG8 1GR

3008 / 23 -8 -17